

# plusfloor

Luxury vinyl

October - December 2020 | Trade



# Contents

4-10

Formation

- 4 Formation Glue Down
- 6 Formation Herringbone
- 8 Formation Click
- 10 Formation XL

11

Ranch Sawn



12-13

Maverick



14-19

Stone

- 14 Stonework
- 15 Nordic Slab
- 16 Nordic Stone
- 18 Silea Concrete



20-21

Composition  
Loose Lay



22-23

About Us



24-26

Accessories

- 24 Installation & Aftercare
- 26 Trims



27

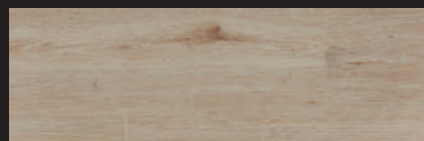
Logistics





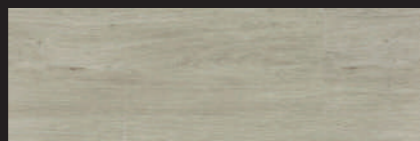
# Formation Plank

Luxury vinyl glue down plank



White Washed

PLF4250G



Clouded Ice

PLF4266G



Pastel Blanc

PLF4252G



French Loft

PLF4254G



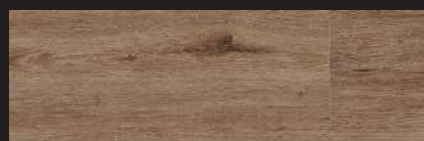
Pure Oyster

PLF4260G



Forest Cream

PLF4276GD



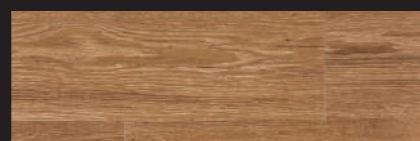
Bronzed Urbane

PLF4258G



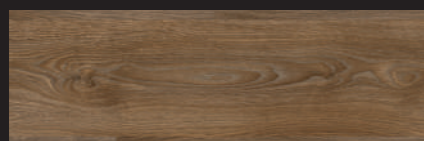
Silvery Clay

PLF4262G



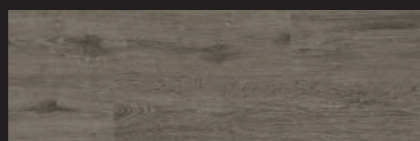
Warm Hessian

PLF4256G



Silent Fawn

PLF4275GD



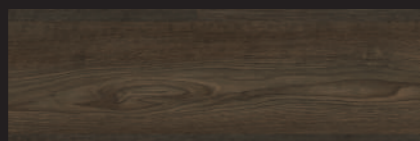
Blanched Carbon

PLF4264G



Burnt Cocoa

PLF4268G



Toasted Nutmeg

PLF4277GD

## Visit our website

[www.plusfloor.com](http://www.plusfloor.com) to see the full range of Plusfloor products to suit all styles.

The surface texture and underlying Truegrain quality of our most popular Plusfloor product is exceptional. The planks are covered in a durable layer of clear PVC, giving a very realistic wood impression when the floor reflects light. Plusfloor is hard wearing so is a perfect choice for any space.

Images and samples are helpful but true appreciation comes from seeing the product installed and that's what we love about the floor we have developed.

We're sure you'll love it too.

## Specification

Fixing:	Glue Down
Joint:	Butt
Plank	1-Strip vinyl
Finish:	Truegrain Embossed
Edge:	Bevelled
Width:	196mm
Length:	1320mm
Thickness:	2.5mm
Wear Layer:	0.55mm
Slip Rating:	Anti-slip
Pack Size:	3.62m <sup>2</sup>

**10 year commercial warranty**

**20 year residential warranty**



PLF4277GD





A true flooring classic, Parquet floors have once again come to the fore of cutting edge design, complimenting both modern and classic interior styles

Our Herringbone collection provides a touch of sophistication to any space, large or small, with the elegance of the pattern drawing the eye. The options are endless; Herringbone, Dutch or Ladder pattern, the choice is yours.

#### Specification

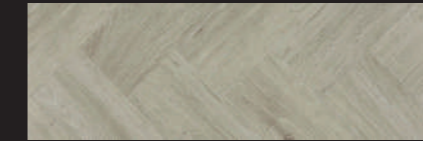
Fixing:	Glue Down
Joint:	Butt
Plank:	Herringbone
Finish:	Truegrain Embossed
Edge:	Bevelled
Width:	158mm
Length:	632mm
Thickness:	2.5mm
Wear Layer:	0.55mm
Slip Rating:	36PTV+
Pack Size:	2.40m <sup>2</sup>

**10 year commercial warranty**

**30 year residential warranty**

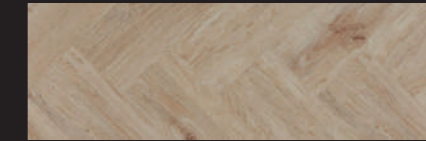
# Formation Herringbone

Luxury vinyl glue down herringbone



Clouded Ice

PLF4266GH



White Washed

PLF4250GH



Pastel Blanc

PLF4252GH



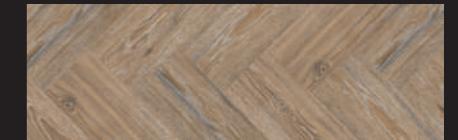
French Loft

PLF4254GH



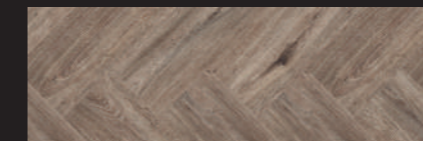
Rich Savannah

PLF4245GH



Pure Oyster

PLF4260GH



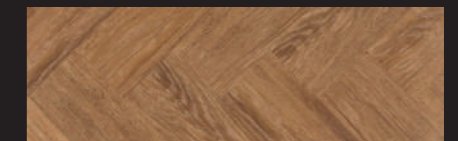
Silvery Clay

PLF4262GH



Bronzed Urbane

PLF4258GH



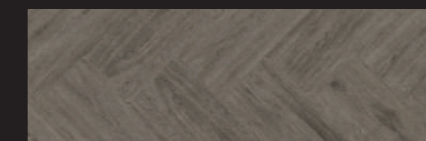
Warm Hessian

PLF4256GH



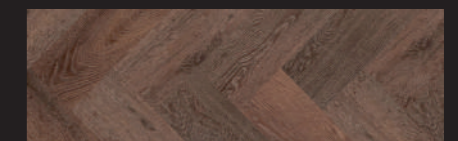
Country Grey

PLF4230GH



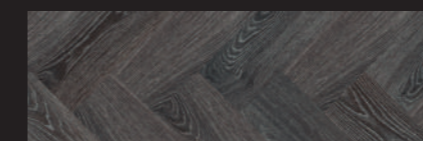
Blanched Carbon

PLF4264GH



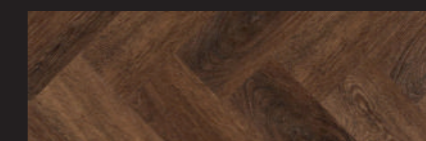
Smoked Azur

PLF4235GH



Midnight Charcoal

PLF4240GH



Burnt Cocoa

PLF4268GH

#### Free samples

Give us a call for expert advice  
01524 481118 or visit our London  
showroom in Farringdon



# Formation Click

Luxury rigid vinyl plank

Well established as the go-to 'rigid click' system vinyl in the UK, our click lock flooring is a tried and tested system that works.

Quick and simple to install, for those jobs where time really does matter, our click lock construction is a must for those jobs where a real wood floor just won't cut it. With our Truegrain finish as standard, your feet won't be able to tell the difference.

Our rigid click isn't just beautiful to look at, it's also fully waterproof, perfect for large scale apartment developments, where you don't want to worry about spills and splashes or wear and tear.

## Specification

Fixing: Click Lock / UNLIN profile

Joint: Butt

Plank: 1-Strip vinyl

Finish: Truegrain Embossed  
Waterproof Construction

Edge: Micro-Bevelled

Width: 180mm

Length: 1220mm

Thickness: 4.2mm

Wear Layer: 0.3mm

Slip Rating: 36+ PTV wet

Pack Size: 2.6352m<sup>2</sup>

**5 year commercial warranty**

**20 year residential warranty**



Clouded Ice

PLF4266



Pastel Blanc

PLF4252



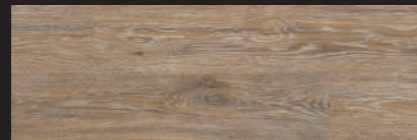
White Washed

PLF4250



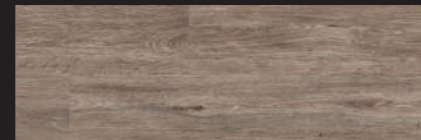
French Loft

PLF4254



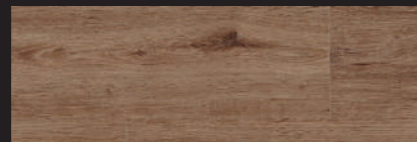
Pure Oyster

PLF4260



Silvery Clay

PLF4262



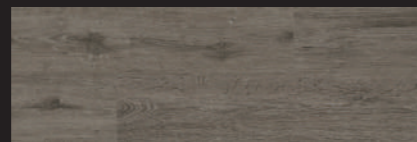
Bronzed Urbane

PLF4258



Warm Hessian

PLF4256



Blanched Carbon

PLF4264



Burnt Cocoa

PLF4268





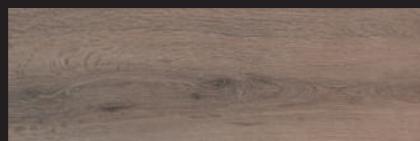
# Formation XL

Large format glue down plank



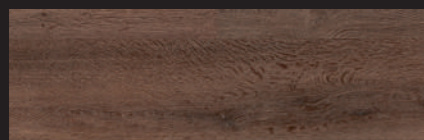
Rich Savannah

PLF4245G



Country Grey

PLF4230G



Smoked Azur

PLF4235G



Midnight Charcoal

PLF4240G

To create a truly superior feel, choose our XL collection. Four new design-led colours with extra width, length and luxury. The complexion of this product offers a naturalistic feel with the benefit of *low maintenance*.

## Specification

Fixing:	Glue Down
Joint:	Butt
Plank	1-Strip Plank
Finish:	Truegrain Embossed
Edge:	Bevelled Edge
Width:	246mm
Length:	1498mm
Thickness:	2.5mm
Wear Layer:	0.55mm
Slip Rating:	36+PTV
Pack Size:	3.69m <sup>2</sup>

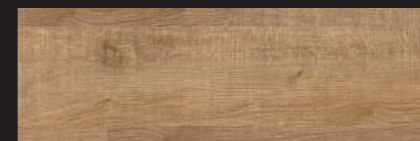
**10 year commercial warranty**

**30 year residential warranty**



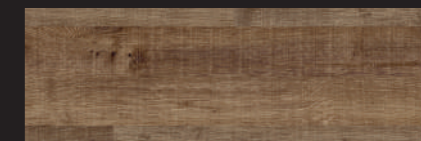
# Ranch Sawn

Distressed character with warmth and style



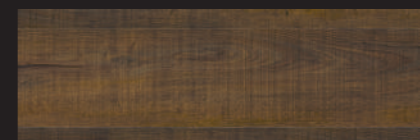
Melrose

PLF4205GD



Cartmel

PLF4210GD



Eton

PLF4215GD



Black Lake

PLF4220GD

Sawing, brushing and planing techniques of a distressed floorboard are perfectly replicated in our new Sawn Collection. This dramatic look brings the warmth and style of the British countryside to any space. Choose from our four carefully selected colours which all give the impression of hundreds of years of use, without compromising on warranty.

## Specification

Fixing:	Glue Down
Joint:	Butt
Plank	1-Strip Plank
Finish:	Truegrain
Edge:	Bevelled
Width:	196mm
Length:	1320mm
Thickness:	2.5mm
Wear Layer:	0.55mm
Slip Rating:	35PTV
Pack Size:	3.62m <sup>2</sup>

**10 year commercial warranty**

**20 year residential warranty**



# 01.

Quick & easy to install

# 02.

Can be installed over uneven subfloor

# 03.

21dB Rating

# 04.

Can be installed in up to 95% RH

# 05.

Waterproof

- Integrated Underlay
- Can be installed in up to 95% RH
- Robust click system
- Low maintenance
- Easy click system installation
- Save on fitting costs
- 100% Recyclable
- Can be installed over an SR3 Subfloor

## Maverick

Unparalleled design and real strength



Skarn

PLF3015



Dacite

PLF3010



Basalt

PLF3005



Gabbro

PLF3020



Flint

PLF3025



Willow

PLF3030



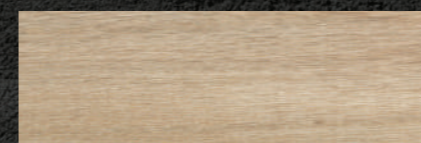
Adler

PLF3035



Edson

PLF3040



Hinton

PLF3045



Firwood

PLF1004

Developed to meet uncompromising standards in looks, performance and comfort. This hard surface flooring is the answer to all of your needs. Maverick is a floor that combines unparalleled design, real strength and high comfort.

This product composition is extensively engineered and multi layered, being developed and produced in Europe, guaranteeing a truly unique product.

### Specification

Fixing:	Click Lock
Joint:	Click System
Plank	1-Strip Plank
Edge:	Bevelled
Width:	189mm
Length:	1317mm
Thickness:	6mm
Wear Layer:	0.55mm
Slip Rating:	36PTV
Pack Size:	1.99m <sup>2</sup>

**10 year commercial warranty**  
**20 year residential warranty**



# Stonework

Luxury vinyl tile with an integrated grout line

In another UK first for Plusfloor, we are proud to present our latest collection: Plusfloor Stone. Whilst we know stone isn't new, our integrated grout lines and design trend-setting colours definitely are.

We want to completely redefine the way stone look products are used in interiors, with quicker and easier installation and more applications than ever before.

Forget messing around with feature strips and expensive and timely fitting, our integrated grout lines mean you can just lay the floor, simple as that.

## Specification

Fixing:	Glue Down
Joint:	Butt Integrated Grout line
Plank	Vinyl Tile
Finish:	Truegrain Embossed
Edge:	Two-sided square
Width:	305mm
Length:	610mm
Thickness:	2.5mm
Wear Layer:	0.55mm
Slip Rating:	R10
Pack Size:	3.34m <sup>2</sup>

**10 year commercial warranty**

**30 year residential warranty**



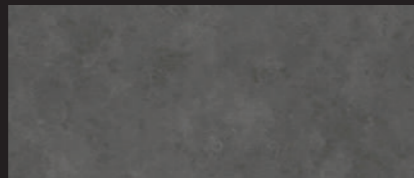
Honed Crema

PLF2500GD



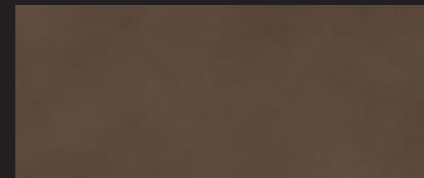
Ocean Grey

PLF2505GD



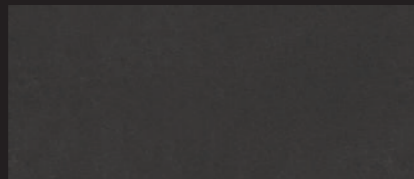
Dark Nimbus

PLF2510GD



Portman Earth

PLF2515GD



Aston Noir

PLF2520GD



PLF2515GD

# Nordic Slab

Luxury vinyl glue down tile



White Concrete

PLF2550G



Light Grey Concrete

PLF2545G



Washed Grey Concrete

PLF2540G



Dark Grey Concrete

PLF2535G

Nordic Slab brings you a broad range of modern and traditional stone finishes to coordinate with the Nordic Plank.

This is a heavy contract tile suitable for commercial spaces with heavy wear such as receptions areas, breakout spaces and collaboration zones available in glue down.

## Specification

Fixing:	Glue Down
Joint:	Butt
Plank	Tile
Finish:	Embossed
Edge:	Bevelled Edge
Width:	329mm
Length:	659mm
Thickness:	2.5mm
Wear Layer:	0.55mm
Slip Rating:	R10
Pack Size:	3.47m <sup>2</sup>

**10 year commercial warranty**

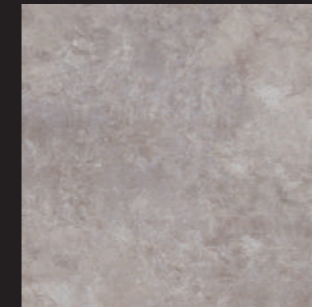
**20 year residential warranty**





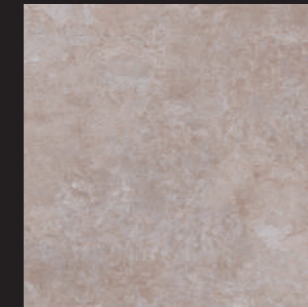
# Nordic Stone

Luxury vinyl glue down tile



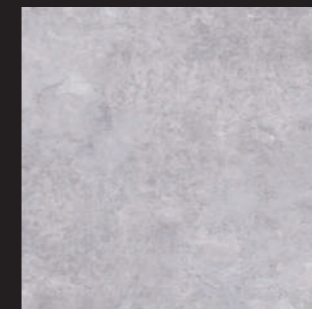
Chalk

PLF2555G



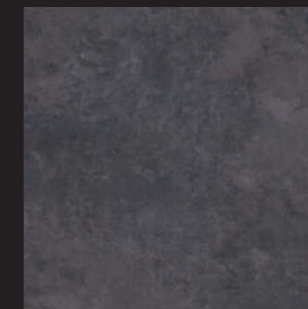
Sand

PLF2570G



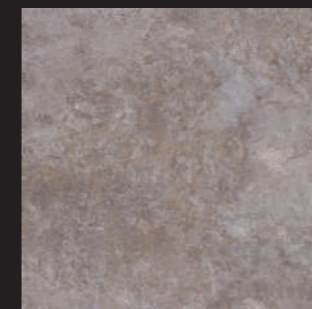
Pearl

PLF2560G



Slate

PLF2575G



Rust

PLF2565G



Smoke

PLF2580G

Nordic Stone is a large format 914 X 914 tile collection available in six beautiful colourways; choose from light natural marbles through to dark textured slate finishes.

This is a heavy contract tile suitable for commercial spaces with heavy wear such as reception areas, breakout spaces and collaboration zones.

## Specification

Fixing:	Glue Down
Joint:	Butt
Plank:	Vinyl Tile
Finish:	Embossed
Edge:	Bevelled
Width:	914mm
Length:	914mm
Thickness:	2.5mm
Wear Layer:	0.55mm
Slip Rating:	R10
Pack Size:	5.02m <sup>2</sup>

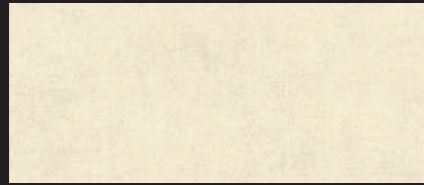
**10 year commercial warranty**

**20 year residential warranty**



# Silea Concrete

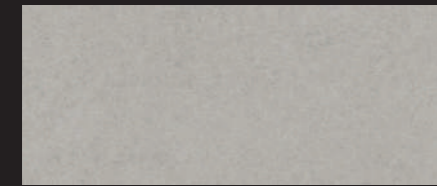
Heavy contract sheet vinyl



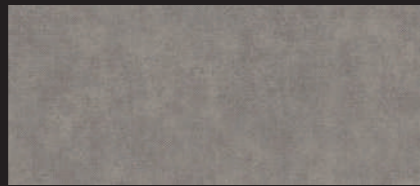
SC803



SC804



SC800



SC806



SC807



SC802



SC808

Silea Concrete brings you a broad range of modern and traditional concrete finishes, with neutral colourways and a smooth texture to bring the modern industrial look to your flooring in a seamless sheet vinyl.

## Specification

Fixing:	Glue Down
Joint:	Weld
Plank:	Sheet Vinyl
Finish:	Embossed
Edge:	Square
Width:	2m & 4m
Length:	25m
Thickness:	3mm
Wear Layer:	0.55mm
Slip Rating:	R10
Acoustic Insulation:	18db
Pack Size:	50m <sup>2</sup> /Roll

**10 year commercial warranty**

**20 year residential warranty**

## Visit our website

[www.plusfloor.com](http://www.plusfloor.com) to see the full range of Plusfloor products to suit all styles.



SC800



# Composition Loose Lay

Wood & Stone loose lay vinyl

Plusfloor takes to the floor with the Composition collection of loose lay vinyl's in beautiful wood planks and stones designs. This is a fast-fit flooring solution, easy installation with minimal downtime.

We also produce the Composition in a giant 914 X 914 tile which is one of the largest on the market.

## Specification

Fixing:	Tackifier
Joint:	Butt
Plank:	Format
Finish:	Embossed
Edge:	Square
Length x Width	1219 x 184mm (White Oak, Light Oak, Brown Oak) 228 x 1422mm (Grey Oak, Natural Oak, Dark Oak) 177 x 1220mm (Washed Oak, Original Oak)
Pack Size	1.79m <sup>2</sup> (White Oak, Light Oak, Brown Oak) 1.95m <sup>2</sup> (Grey Oak, Natural Oak, Dark Oak) 2.17m <sup>2</sup> (Washed Oak, Original Oak)
Thickness:	5mm
Wear Layer:	0.7mm
Slip Rating:	R10

**15 year commercial warranty**

**30 year residential warranty**



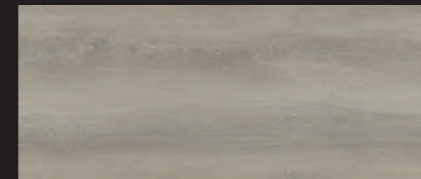
Park Natural Oak



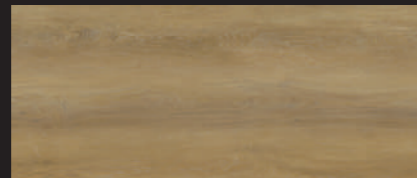
Park Grey Oak



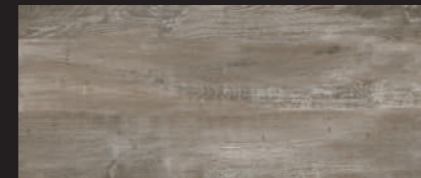
Park Original Oak



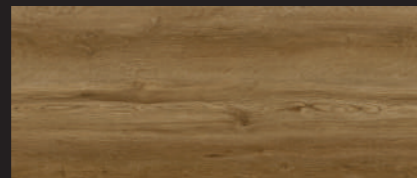
Park White Oak



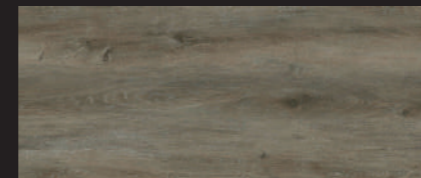
Park Light Oak



Park Washed Oak



Park Dark Oak



Park Brown Oak



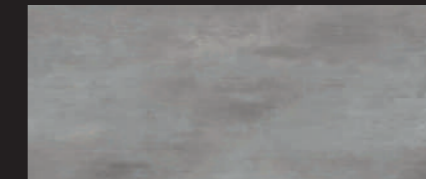
Light Grey Pavement

## Specification

Fixing:	Tackifier
Joint:	Butt
Plank:	Plank
Finish:	Embossed
Edge:	Square
Length x Width	457 x 914mm (Light Grey, Dark Brown Pavement) 500 x 500mm (Polished Concrete) 914 x 914mm (Dark Grey Pavement)
Pack Size	2.5m <sup>2</sup> (Light Grey, Dark Brown Pavement) 3m <sup>2</sup> (Polished Concrete) 3.34m <sup>2</sup> (Dark Grey Pavement)
Thickness:	5mm
Wear Layer:	0.7mm
Slip Rating:	R10

**15 year commercial warranty**

**30 year residential warranty**



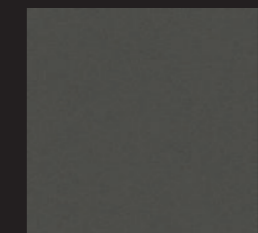
Light Grey Pavement



Dark Brown Pavement



Dark Grey Pavement



Polished Concrete



# About Us

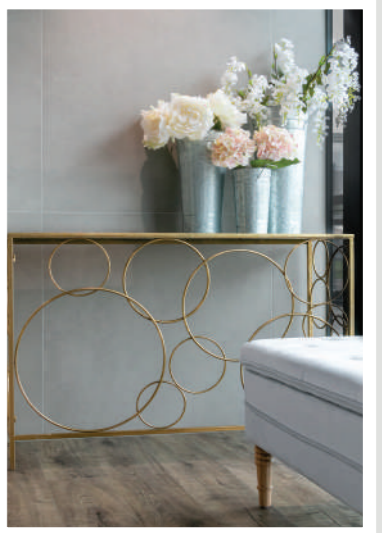
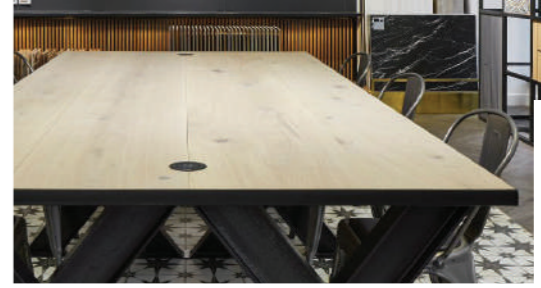
## Meet Darren

Here at Plusfloor our goal is to provide consumers with a product and experience that they will never forget. Therefore it is especially important to me that all products are packaged and distributed to comply with our company standards. Our mission is to be able to deliver our products on time in the best possible condition with the aim to continuously improve. It is a guarantee that all products that leave our warehouse are quality checked and packed with the upmost care and attention.



*Darren*

Darren Dent  
Warehouse Manager



London Showroom & Plusfloor HQ



# Accessories

## Installation & Aftercare



**Plusfloor Adhesive**  
PLF562 | 15kg/50m<sup>2</sup> | £55.95  
*Suitable for all LVT flooring*



**Plusfloor Adhesive**  
PLF562-5 | 5kg/16m<sup>2</sup> | £18.95  
*Suitable for all LVT flooring*



**Plusfloor High Temperature Adhesive**  
PLF800HT | 12kg/40m<sup>2</sup> | £56.95  
*Suitable for all LVT flooring*



**Spray mop kit**  
950112 | £24.95  
*Kit includes mop, mop head & cleaner cartridge*



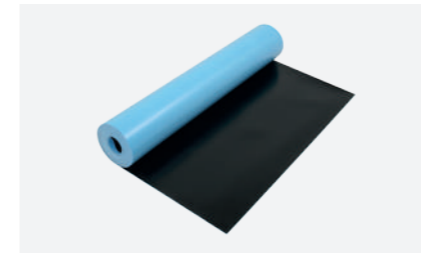
**Notch Trowel**  
390/25/A2 | £8.95  
*Available in 15mm*



**Jointing Tape**  
150034 | 96mm | £8.50  
*Aluminium foil tape – for taping joints. 45m length*



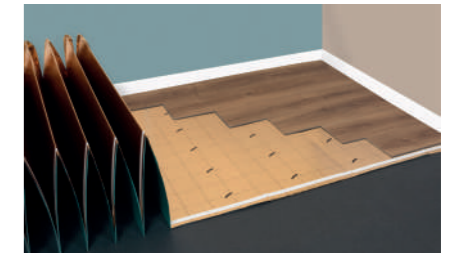
**Nano Prime**  
Mono-component primer  
PLF525-10 | 5L | £31.95  
*For use under Plusfloor Adhesive.*



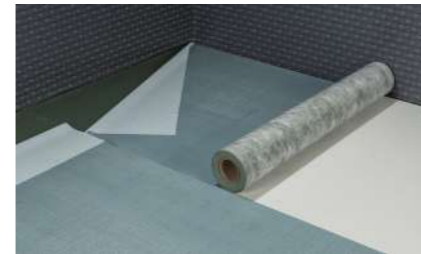
**Sound Barrier Underlay**  
PLF0006-6 | 6m<sup>2</sup> | £24.95  
0.9m x 1mm *For use under Plusfloor click*



**Contract Foam Underlay**  
PLF0010-50 | 50m<sup>2</sup> | £62.95  
1m x 1.5mm *For use under Plusfloor click*



**Plusfloor Gold Standard Underlay**  
PLF0015-96 | 9.6m<sup>2</sup> 1.5mm thickness | £25.00  
*For use under Plusfloor click*



**Adhesive Backed Underlay**  
PLF0012-65 | 6.5m<sup>2</sup> Roll | £34.95  
1m x 1.8mm *For use with Plusfloor GD products*



**Two Part Smoothing Compound**  
PLF527 | £18.95  
20kg & 5 Litre



**One Coat Damp Proof Membrane**  
PLF528 | £109.95  
10kg



**Prime Plus**  
PLF526 | £21.95



**2SAN Bucket Wipes**  
ST0016 | £29.50



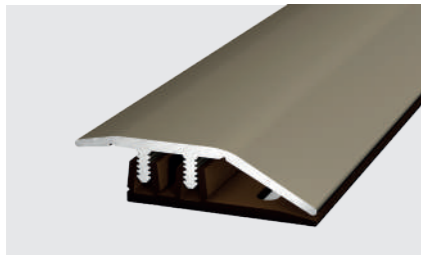
**2SAN Hand Gel & Pelican Pump**  
ST3322A | £15.95  
ST0011 | £2.75



# Accessories

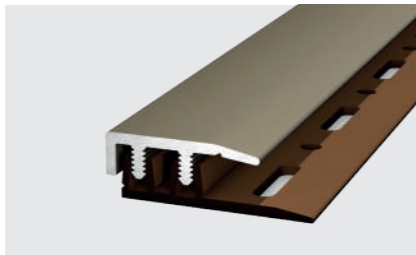
Here at Plusfloor we want to be the one stop shop for all things LVT – from specification to installation. We've increased our range of accessories after requests from customers, to include a range of trims and edge

sections to finish every floor perfectly. With a smooth neutral matte steel finish, our stocked trims bring an air of class and elegance to any floor edge – smoothing joints between floors, stairs and around expansion gaps.



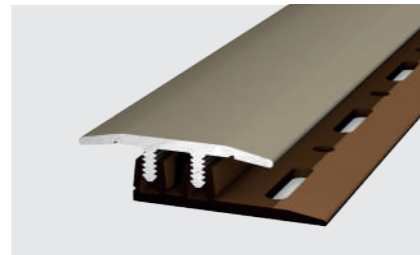
## Ramp Section

PLF323T | 1m Length | £10.95<sup>+VAT</sup>  
Includes base plate.  
Suitable for any Plusfloor Click product



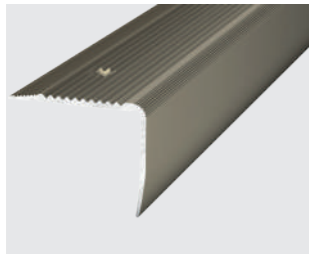
## End Section

PLF324T | 1m Length | £8.95<sup>+VAT</sup>  
Includes base plate.  
Suitable for any Plusfloor Click product



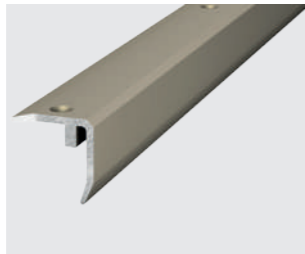
## T Profile

PLF322T | 1m Length | £9.95<sup>+VAT</sup>  
Includes base plate.  
Suitable for any Plusfloor Click product



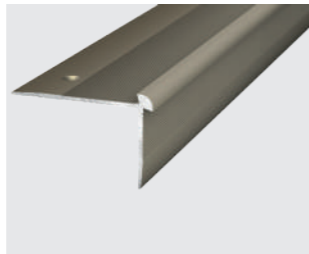
## Commercial Stair Nosing

PLF172T | 2.5m Length | £29.95<sup>+VAT</sup>  
Countersunk Screw Holes.  
Suitable for any Plusfloor Glue Down product in both Residential & Commercial environments.



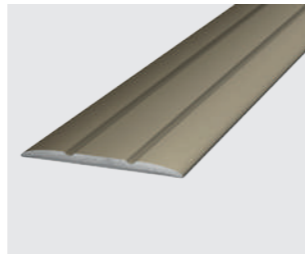
## Stair Nosing

PLF331T | 1m Length | £14.45<sup>+VAT</sup>  
Includes base plate.  
Suitable for any Plusfloor Click product.



## Stair Nosing

PLF287T | 2.5m Length | £15.95<sup>+VAT</sup>  
Includes base plate.  
Suitable for any glue down product



## Connection Section

PLF135T | 0.9m Length | £5.95<sup>+VAT</sup>  
Self Adhesive  
Suitable for any Plusfloor Product.

# Logistics

## Delivery rates

All orders over £1000 delivered FREE on a 3-4 day service to the mainland. Deliveries under £1000 are as per below.

Below carriage paid	£35
Next day	£40
Certain day	£40
Next day AM	£45
Saturday	£60

## Prices

All Vinyl prices are in m<sup>2</sup> and are exclusive of VAT

## Description & material specification

Any samples, drawings, images, descriptive matter, or advertising produced by us and any descriptions or illustrations contained in our catalogues, websites or brochures are produced for the sole purpose of giving an approximate idea of the products described in them.

They shall not form part of the contract or have any contractual force. The images of the products are for illustrative purposes only. Although we have made every effort to display the colours accurately, we cannot guarantee that your computer's display or the quality of the print will accurately reflect the colour of the products.

Your products may vary slightly from those images.



## London Showroom

66 Turnmill St, Clerkenwell, London, EC1M 5RR

## Opening times

Monday to Friday  
8.30 – 5.30pm  
7:30 – 4:30pm (HQ)

## Returns

Returns will be subject to a handling charge of 20%, plus return carriage charge. Open packs cannot be returned for credit.

## Your right to return

Please note our standard carriage terms:

1. All damages must be reported within 4 days.
2. Any damaged or missing goods must be signed for accordingly (ie "damaged" or "missing"). Phrases such as "unchecked" will not be accepted.
3. Your notice of intent to return damaged goods must be made within 14 days.
4. Before returning any goods a return order number must be obtained from Plusfloor's sales Department. please write this number, together with the names of both sender and recipient, clearly on each unit being returned.



## Global HQ

Unit 11, Oakwood Way, Carnforth Business Park, Carnforth, LA5 9FD, UK

T: +44(0)1524 481118

info@plusfloor.com

www.plusfloor.com

5. If goods are refused (ie not offloaded) please ensure that the documentation recording this also contains your representatives name, signature and date.
6. Please ensure that you obtain a name, signature and date from whomsoever accepts goods for return (eg, the van driver or Plusfloor representative).
7. Do not allow any driver to remove goods without documentation from their company instructing them to do so; such documentation may be arranged through Plusfloor's transport department. NB If Plusfloor's permission to remove is not obtained and the goods go missing Plusfloor will not accept any responsibility to issue a refund.
8. Please note that, in the case of special or timed deliveries, delivery charges excluded, Plusfloor cannot accept responsibility for consequential loss due to late delivery



# plusfloor

Luxury vinyl

**Sales line: +420 608 684 248**

[podlahy-havwoods.cz](http://podlahy-havwoods.cz) | [info@podlahy-havwoods.cz](mailto:info@podlahy-havwoods.cz)

Part of The Havwoods International Group